

## Product Description

The XB, with ratings up to 5000 watts, is designed for heating spaces where explosive substances are or may be present. The XB is available with either CSA C/US or CE/ATEX approvals. All units can be fitted with an externally adjustable thermostat.

With the XB, you get a safe and reliable heater with a handsome appearance and state-of-the-art design.

Typical applications of the XB include:

**Control cabinets and small enclosures**

**Storage rooms for paints and cleaners**

**Grain elevators**

**Flour mills**

**Spray booths**

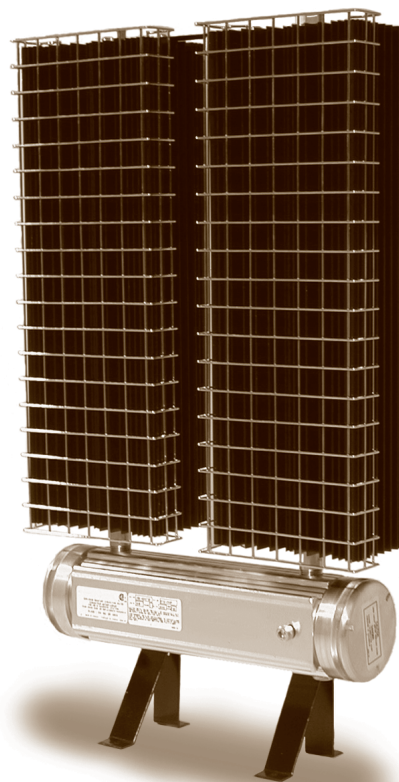
**Gas plants**

**Pump houses**

**Marine and offshore**

**Oil platforms**

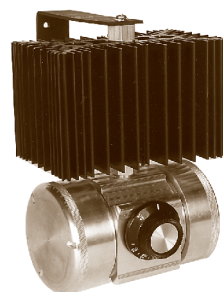
**Cleaning and dyeing plants**



## Selection of Temperature Code

Refer to the atmospheric condition table at the beginning of this section for detailed selection data for the temperature code.

To minimize cost and physical size of the heater, select the heater with the highest temperature code that suits the environment. In tables 7 and 8 a check mark (✓) under the temperature code indicates that the surface temperature of the heater will not exceed the coded value listed in the atmospheric conditions table at the beginning of this section.



## Construction and Installation

The XP and XB explosion-proof convection heaters utilize CCI's unique copper free aluminum extruded convector and patented *x-Max*<sup>®</sup> terminal housing. Large convector surface area and high mass fins ensure safe and efficient low temperature heat transfer to the environment. Convectors are black anodized to resist oxidation and maximize heat transfer.

The *x-Max*<sup>®</sup> housing can be equipped with multiple tapped conduit entries throughout its length to facilitate installation. A track and trolley system and threaded covers at each end allow easy access to internal components. All units, except the single heat sink units, have a built-in

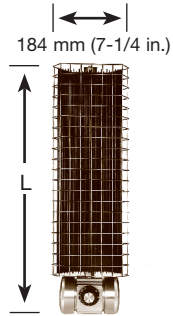
terminal block for simplified electrical connection.

XB units are intended for wall or floor mounting with the heater positioned vertically as shown. Dual purpose brackets for floor or wall mounting and wire guards are supplied as standard.

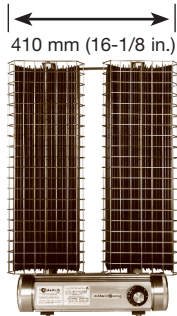
## Special Wattage and Lengths

The following table lists the maximum design wattages for the four standard heat sink lengths and configurations. If standard units listed in Table 12 do not suit your application, a special unit based on Table 13 can be supplied (check factory).

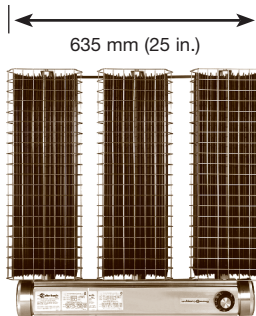
**FIGURE 7**  
XB Single Unit (XB1-)



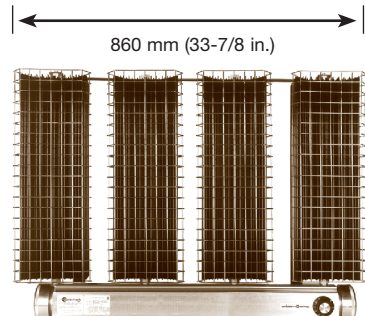
**FIGURE 8**  
XB Double Unit (XB2-)



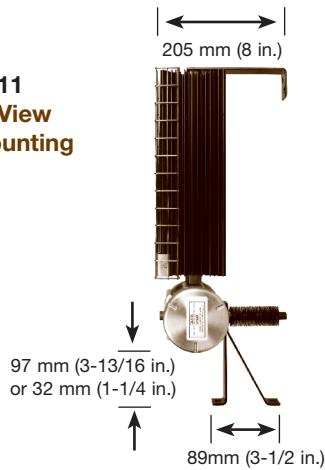
**FIGURE 9**  
XB Triple Unit (XB3-)



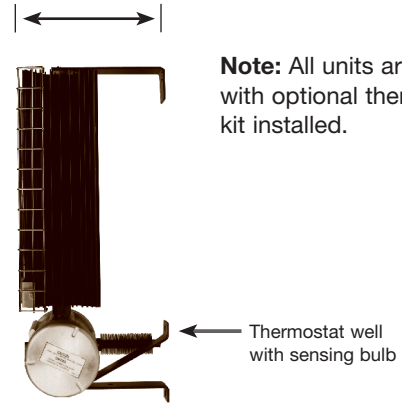
**FIGURE 10**  
XB Quadruple Unit (XB4-)



**FIGURE 11**  
XB Side View  
Floor Mounting



**FIGURE 12**  
XB Side View  
Wall Mounting



**Note:** All units are shown with optional thermostat kit installed.

**TABLE 8 XB Explosion-Proof Convection Heaters - Standard XB Heaters**

Watts	Standard Voltages								'L' Dimension mm (in.)	Temperature Code				Weight lbs (kg)	Part # Class I Division 1, 2 Group A, B, C & D Class II Division 1, 2 Group E, F & G Class III Division 1	Class I Division 1 Group A, B, C & D	
	120 1Ø	208 1Ø 3Ø		240 1Ø 3Ø		480 1Ø 3Ø		600 1Ø 3Ø		T2D	T3B	T4A	T6				
475	✓	✓	-	✓	-	-	-	-	-	254 (10.0)	✓	-	-	-	10 (4.5)	-	XB1-1047T2D
750	✓	✓	-	✓	-	-	-	-	-	424 (16.7)	✓	-	-	-	15 (6.8)	-	XB1-3075T2D
1000	✓	✓	-	✓	-	✓	-	✓	-	594 (23.4)	✓	-	-	-	20 (9.1)	-	XB1-4100T2D
1250	✓	✓	-	✓	-	✓	-	✓	-	765 (30.1)	✓	-	-	-	25 (11.3)	-	XB1-6125T2D
1500	✓	✓	✓	✓	✓	-	-	-	-	424 (16.7)	✓	-	-	-	30 (13.6)	-	XB2-3150T2D
2000	✓	✓	✓	✓	✓	✓	✓	✓	✓	594 (23.4)	✓	-	-	-	40 (18.1)	-	XB2-4200T2D
3000	✓	✓	✓	✓	✓	✓	✓	✓	✓	594 (23.4)	✓	-	-	-	60 (27.2)	-	XB3-4300T2D
3750	✓	✓	✓	✓	✓	✓	✓	✓	✓	765 (30.1)	✓	-	-	-	75 (34.0)	-	XB3-6375T2D
4500	-	✓	✓	✓	✓	✓	✓	✓	✓	765 (30.1)	✓	-	-	-	100 (45.4)	-	XB4-6450T2D

**TABLE 9 XB Explosion-Proof Convection Heaters - Other Available XB Heaters**

Watts	Standard Voltages								'L' Dimension mm (in.)	Temperature Code				Weight lbs (kg)	Part #	Class I Division 1, 2 Group A, B, C & D		
	120		208		240		480			600		T2D	T3B		T4A		T6	Class II Division 1, 2 Group E, F & G
	1Ø	3Ø	1Ø	3Ø	1Ø	3Ø	1Ø	3Ø	1Ø	3Ø								
50	•	-	-	-	-	-	-	-	-	-	254 (10.0)	•	•	•	•	10 (4.5)	XB1-1005T6	-
100	•	-	-	-	-	-	-	-	-	-	254 (10.0)	•	•	•	-	10 (4.5)	XB1-1010T4A	-
175	•	-	-	-	-	-	-	-	-	-	254 (10.0)	•	•	•	-	10 (4.5)	XB1-1017T4A	-
200	•	•	-	•	-	-	-	-	-	-	765 (30.1)	•	•	•	•	25 (11.3)	XB1-6020T6	-
300	•	-	-	-	-	-	-	-	-	-	254 (10.0)	•	•	-	-	10 (4.5)	XB1-1030T3B	-
400	•	•	•	•	•	-	-	-	-	-	765 (30.1)	•	•	•	•	50 (22.7)	XB2-6040T6	-
450	•	•	-	•	-	•	-	•	-	-	765 (30.1)	•	•	•	-	25 (11.3)	XB1-6045T4A	-
475	•	•	-	•	-	-	-	-	-	-	424 (16.7)	•	•	-	-	15 (6.8)	XB1-3047T3B	-
600	•	•	•	•	•	-	-	-	-	-	765 (30.1)	•	•	•	•	75 (34.0)	XB3-6060T6	-
750	•	-	-	-	-	-	-	-	-	-	254 (10.0)	•	-	-	-	20 (9.1)	-	XB2-1075T2D
800	•	•	•	•	•	-	-	-	-	-	765 (30.1)	•	•	•	•	100 (45.4)	XB4-6080T6	-
850	•	•	-	•	-	•	-	•	-	-	765 (30.1)	•	•	•	-	50 (22.7)	XB2-6085T4A	-
1000	•	-	-	-	-	-	-	-	-	-	254 (10.0)	•	-	-	-	30 (13.6)	-	XB3-1100T2D
1000	•	•	•	•	•	-	-	-	-	-	594 (23.4)	•	•	-	-	40 (18.1)	XB2-4100T3B	-
1000	•	•	•	•	•	-	•	-	-	-	424 (16.7)	•	•	-	-	45 (20.4)	XB3-3100T3B	-
1250	•	•	•	•	•	•	•	•	•	•	765 (30.1)	•	•	•	-	75 (34.0)	XB3-6125T4A	-
1250	•	-	-	-	-	-	-	-	-	-	254 (10.0)	•	-	-	-	30 (13.6)	-	XB3-1125T2D
1350	•	•	-	•	-	•	-	•	-	-	765 (30.1)	•	-	-	-	25 (11.3)	-	XB1-6135T2D
1500	•	-	-	-	-	-	-	-	-	-	254 (10.0)	•	-	-	-	40 (18.1)	-	XB4-1150T2D
1500	•	•	•	•	•	-	•	-	•	-	594 (23.4)	•	•	-	-	60 (27.2)	XB3-4150T3B	-
1500	•	•	•	•	•	•	•	•	•	•	765 (30.1)	•	•	-	-	50 (22.7)	XB2-6150T3B	-
1600	•	•	•	•	•	•	•	•	•	-	765 (30.1)	•	•	•	-	100 (45.4)	XB4-6160T4A	-
2000	•	•	•	•	•	-	-	-	-	-	424 (16.7)	•	-	-	-	45 (20.4)	-	XB3-3200T2D
2250	•	•	•	•	•	-	-	-	-	-	594 (23.4)	•	•	-	-	80 (36.3)	XB4-4225T3B	-
2250	•	•	•	•	•	•	•	•	•	•	765 (30.1)	•	•	-	-	75 (34.0)	XB3-6225T3B	-
2500	•	•	•	•	•	•	•	•	•	-	242 (16.7)	•	-	-	-	60 (27.2)	-	XB4-3250T2D
2500	•	•	•	•	•	•	•	•	•	•	765 (30.1)	•	-	-	-	50 (22.7)	-	XB2-6250T2D
3000	•	•	•	•	•	•	•	•	•	•	765 (30.1)	•	•	-	-	100 (45.4)	XB4-6300T3B	-
3750	•	•	•	•	•	•	•	•	•	•	594 (23.4)	•	-	-	-	80 (36.3)	-	XB4-4375T2D
5000	-	•	•	•	•	•	•	•	•	•	765 (30.1)	•	-	-	-	100 (45.4)	-	XB4-6500T2D

TABLE 10 XB Maximum Heater Wattages

Heat Sink Length	Type	Temperature Code			
		T2D	T3B	T4A	T6
130 mm	XB1	475	300	190	95
	XB2	938	-	-	-
	XB3	1314	-	-	-
	XB4	1524	-	-	-
300 mm	XB1	783	498	294	142
	XB2	1520	988	570	266
	XB3	2173	-	-	-
	XB4	2608	-	-	-
470 mm	XB1	1021	684	380	209
	XB2	2033	1282	722	342
	XB3	3049	1881	1026	456
	XB4	3780	-	-	-
640 mm	XB1	1353	831	451	237
	XB2	2688	1615	864	408
	XB3	4018	2308	1254	612
	XB4	5130	3230	1653	836

## Thermostats

CCI offers a wide variety of explosion-proof thermostats to suit most every need.

All model XB heaters can be fitted with integral line voltage thermostats which are available either externally adjustable or tamper-proof; factory installed or as field installed kit.

Remote thermostat mounting is also available.

Refer to page 23 of this Norseman™ section when selecting the appropriate thermostat for the desired application.

## Accessories

### Wire Guards and Baffles

All units are equipped with wire guards.

'Gull wing' shaped bright aluminum rear baffles are standard with XB units rated for T2D temperature code (shipped separately).

## XB CE / ATEX Explosion-Proof Convection Heater

### Standard Features

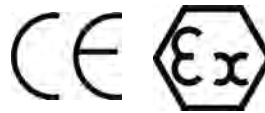
Suitable for the following hazardous location classification: EX II 2 G, EExd IIC T3 OR T4 (See Table 11)

High surface area black anodized heat emitter with integral tubular heating elements

Patented *x-Max*® housing with slide out terminal block trolley simplifies installation and servicing

Nickel plated wire guards on all models

Universal support leg for wall or floor mounting



**TABLE 11 XB CE / ATEX Explosion-Proof Convection Heater Specifications for T3 and T4 Units - Hazardous Location Rating**

Watts	Fig. No.	Volts	Phase	'L' Dim. mm (in.)	Approx. Weight kg (lbs)	Catalog No.	T-Class
399	1	110	1	424 (16.7)	6.8 (15)	XB1-3040T3B	T3
475	1	120	1			XB1-3047T3B	T3
399	1	220	1			XB1-3040T3B	T3
436	1	230	1			XB1-3043T3B	T3
475	1	240	1			XB1-3047T3B	T3
840	2	110	1	594 (23.4)	18.1 (40)	XB2-4084T3B	T3
1000	2	120	1			XB2-4100T3B	T3
840	2	220	1			XB2-4084T3B	T3
918	2	230	1			XB2-4092T3B	T3
1000	2	240	1			XB2-4100T3B	T3
1260	3	110	1	594 (23.4)	27.2 (60)	XB3-4126T3B	T3
1500	3	120	1			XB3-4150T3B	T3
1260	3	220	1			XB3-4126T3B	T3
1378	3	230	1			XB3-4138T3B	T3
1500	3	240	1			XB3-4150T3B	T3
714	2	220	1	765 (30.1)	22.7 (50)	XB2-6071T4B	T4
781	2	230	1			XB2-6078T4B	T4
850	2	240	1			XB2-6085T4B	T4
1891	3	220	1	765 (30.1)	34.0 (75)	XB3-6189T3B	T3
2066	3	230	1			XB3-6207T3B	T3
2250	3	240	1			XB3-6225T3B	T3
2101	3	220	1	594 (23.4)	27.2 (60)	XB3-4210T3B	T3
2296	3	230	1			XB3-4230T3B	T3
2500	3	240	1			XB3-4250T3B	T3
2521	3	220	1	765 (30.1)	34.0 (75)	XB3-6252T3B	T3
2755	3	230	1			XB3-6276T3B	T3
3000	3	240	1			XB3-6300T3B	T3
1260	3	380	3	594 (23.4)	27.2 (60)	XB3-4126T3B	T3
1378	3	400	3			XB3-4138T3B	T3
1500	3	415	3			XB3-4150T3B	T3
1891	3	380	3	765 (30.1)	34.0(75)	XB3-6189T3B	T3
2066	3	400	3			XB3-6207T3B	T3
2250	3	415	3			XB3-6225T3B	T3
2101	3	380	3	594 (23.4)	27.2 (60)	XB3-4210T3B	T3
2296	3	400	3			XB3-4230T3B	T3
2500	3	415	3			XB3-4250T3B	T3
2521	3	380	3	765 (30.1)	34.0 (75)	XB3-6252T3B	T3
2755	3	400	3			XB3-6276T3B	T3
3000	3	415	3			XB3-6300T3B	T3