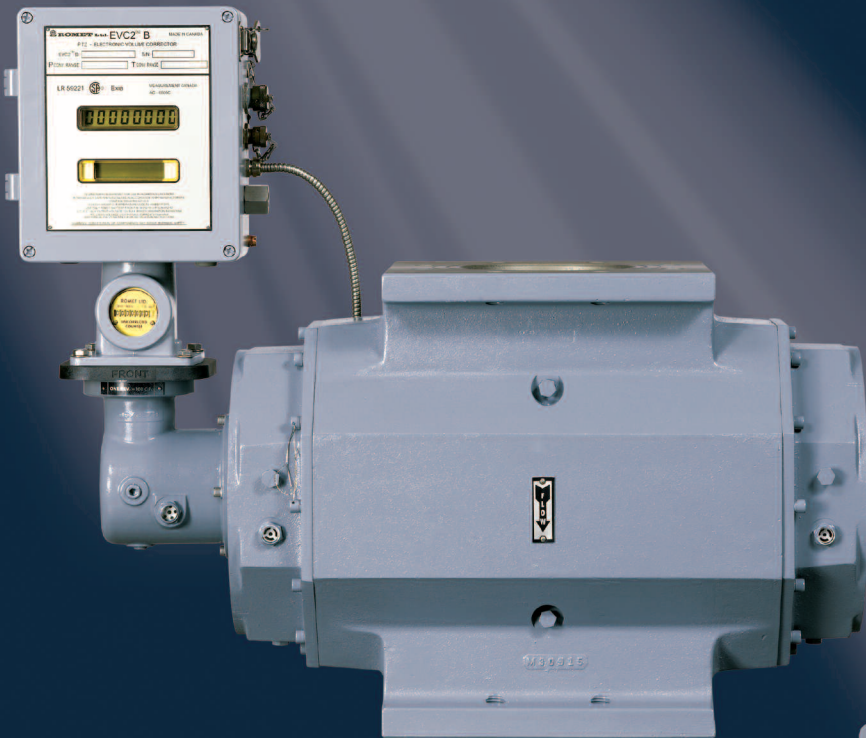




# ROMMET™



FEATURING STD ID MODULE  
WITH METER MOUNT VERSION  
EVC2®B CORRECTOR

FEATURING ECM2®-PTZ  
MODULE WITH REMOTE  
TEMPERATURE PROBE AND  
LIVE PRESSURE



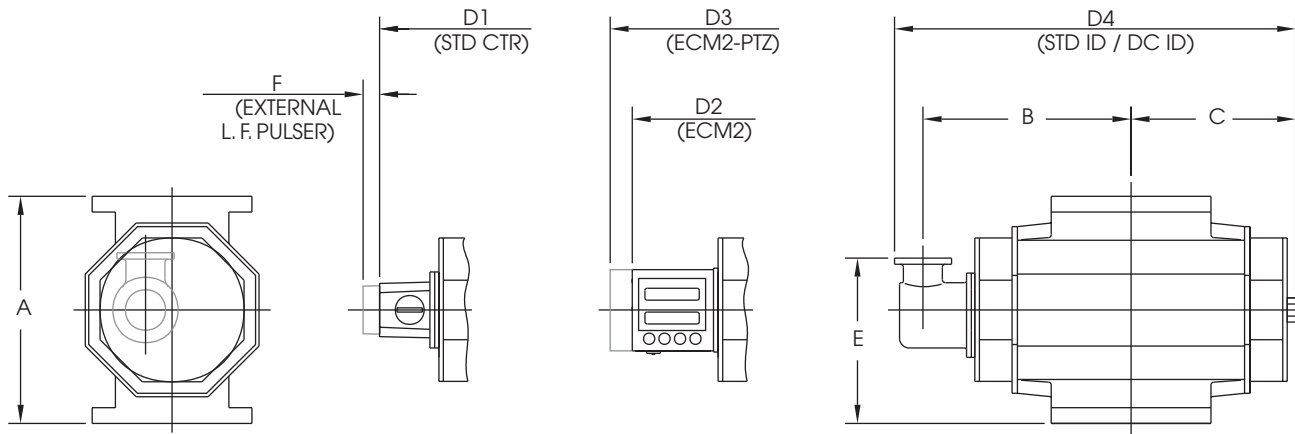
ROTARY GAS METERS

RM38000 • RM1100 • G650

# TECHNICAL SPECIFICATIONS

	RM38000 IMPERIAL	RM1100 & G650 METRIC
MAXIMUM ALLOWABLE OPERATING PRESSURE (MAOP)	175 psig	1206 kPa (12 bar)
FLOW CAPACITY	38,000 acfh	1100 m <sup>3</sup> /h
RANGEABILITY @ ± 1% ERROR	150:1	150:1
RANGEABILITY @ ± 2% ERROR	300:1	300:1
Q <sub>MIN</sub> @ ± 1% ERROR	253 acfh	7.3 m <sup>3</sup> /h
Q <sub>MIN</sub> @ ± 2% ERROR	105 acfh	3.0 m <sup>3</sup> /h
START FLOW RATE	9.5 acfh	0.27m <sup>3</sup> /h
DIFFERENTIAL @ START FLOW RATE	0.06 IWC	15 Pa (0.15mbar)
COUNTER RESOLUTION	10 cf	0.1m <sup>3</sup>
INSTRUMENT DRIVE RATE	100 cf/rev	1.0m <sup>3</sup> /rev
LF PULSER (optional on STD CTR version)	100cf / pulse	1.0m <sup>3</sup> / pulse
WEIGHT	155 lbs	70kg
FLANGE SIZE	RM38000 & RM1100 G650	6" ANSI 125/150 F.F. flange dimension PN16 150mm

\*For other sizes, refer to Rotary Gas Meters RM Imperial and G Metric Series literature.



METER MODEL	A	B	C	D1	D2	D3	D4	E	F
RM38000	16.00"	14.72"	11.20"	25.50"	28.02"	29.52"	27.92"	12.00"	1.25"
G650 & RM1100	406mm	374mm	284mm	648mm	712mm	750mm	709mm	305mm	32mm



**IMAC Systems, Inc.**  
90 Main Street, PO Box 1605  
Tullytown, PA 19007

1-800-955-4GAS  
Phone: (215) 946-2200  
Fax: (215) 943-2984

[sales@imacsystems.com](mailto:sales@imacsystems.com)