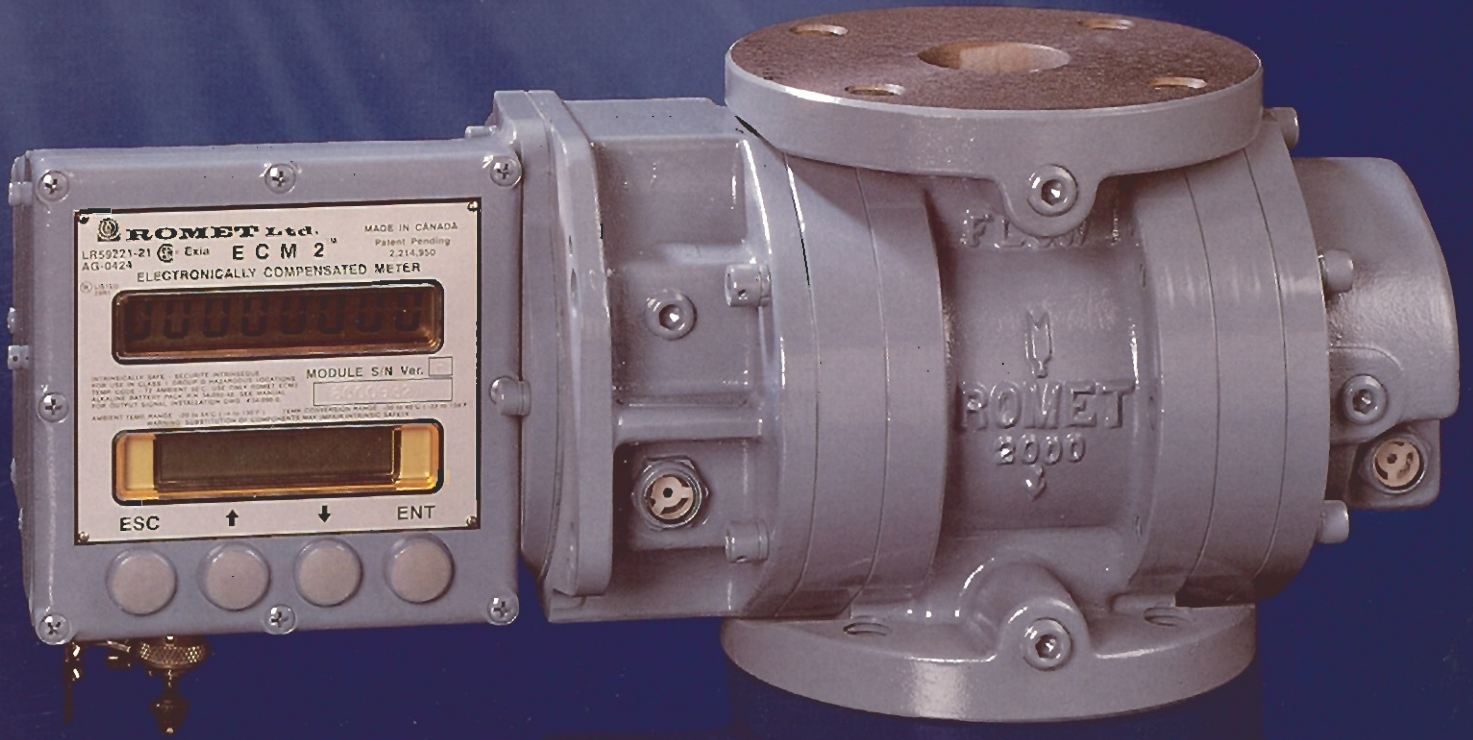




ROMET

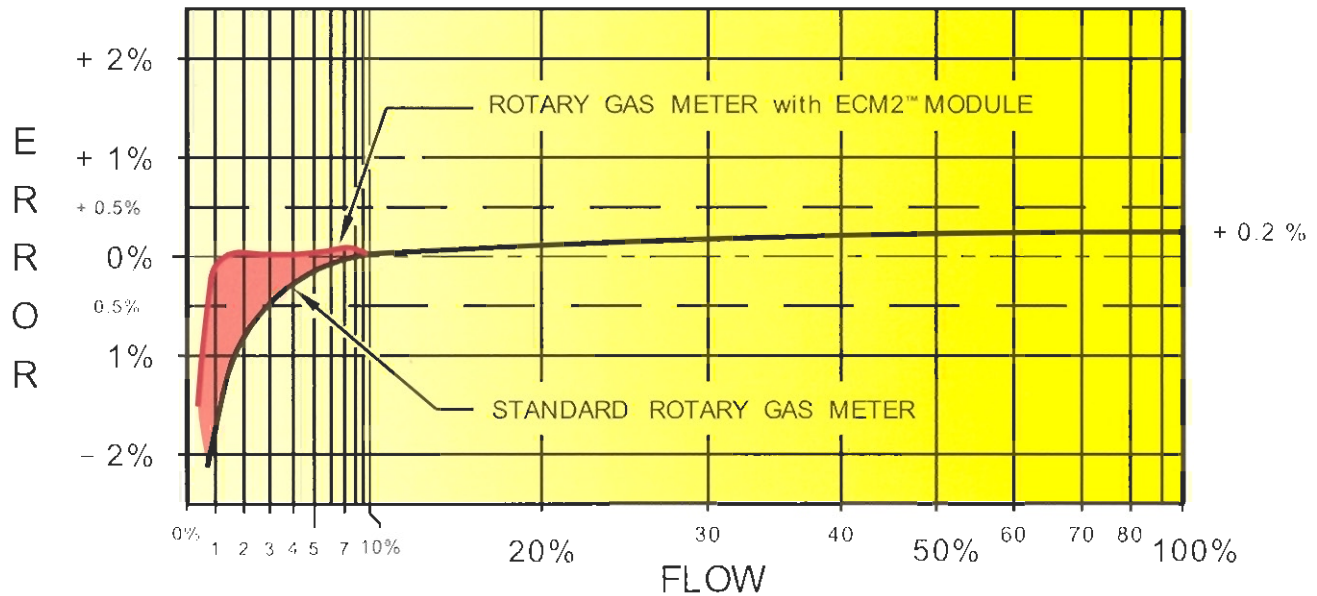


ROTARY GAS METERS

ECM 2™

THE ECM2™ DELIVERS A MEASURABLE DIFFERENCE

- SUPERIOR LOW FLOW MEASUREMENT WITH A RANGEABILITY OF OVER 200:1 WITH LESS THAN 1% ERROR
- VERY LOW START FLOWS (AS LOW AS 1 CFH OR 0.03m³/h)
- TEMPERATURE COMPENSATION ERROR OF LESS THAN 0.3%



ECM2™ TYPICAL ACCURACY CURVE

THE ECM2™ ENSURES THE INTEGRITY OF THE GAS REGISTRATION

- ALL KEY DATA IS PROTECTED IN THE EVENT OF A POWER LOSS
 - LAST HOURLY COR & UNC INDEXES WITH THE DATE & TIME
 - SET UP CONFIGURATION OF ALL THE PARAMETERS
 - CALIBRATION SETTINGS
 - ACCESS PASSWORD
- UNAUTHORIZED ACCESS IS PREVENTED BY THE COMBINATION OF A PASSWORD AND SEALABLE TAMPER SWITCH
- UNIQUE BATTERY MONITORING PROGRAM PROVIDES AN ADVANCED ALARM (6 MONTHS) OF THE BATTERY EXPIRATION

THE ECM2™ IS USER FRIENDLY

- UNIVERSAL MODULE THAT ADAPTS TO ALL ROMET METERS WILL REDUCE INVENTORIES AND FACILITATE THE UPGRADING OF MECHANICAL MODULES
- TWO LARGE DISPLAYS (ONE LCD AND ONE ALPHA-NUMERIC) THAT SHOW BOTH THE PARAMETER VALUE AND THE CORRESPONDING DESCRIPTION – NO CODES TO REMEMBER
- EASY TO FOLLOW MENUS THAT CAN BE QUICKLY SCROLLED WITH THE FOUR LARGE BUTTONS ON THE FRONT FACE
- LIVE FLOW RATE IS DISPLAYED AT THE TOUCH OF A BUTTON – THE CLOCKING OF A MECHANICAL INDEX IS ELIMINATED



THE ECM2™ PERKS

- SELECTABLE, PRECISE FIXED PRESSURE FACTOR FOR PFM APPLICATIONS
- PEAK FLOW RATE MONITORING PROVIDES A CHECK ON THE METER SIZING
- SOLID-STATE OUTPUTS (COR VOLUME, UNC VOLUME & ALARM) THAT PROVIDE A RELIABLE INPUT TO AN AMR SYSTEM
- PROVING MODE PRODUCES A PRECISE PULSE OUTPUT THAT IS COMPATIBLE WITH MOST PROVER SYSTEMS. THE TEST VOLUME CAN BE REDUCED BY 90% BY SELECTING A SMALLER PULSE WEIGHT.



PERFORMANCE SPECIFICATION

ACCURACY

- Total correction error $\pm 0.2\%$ typical; $\pm 0.3\%$ max.

TEMPERATURE

- Operating range: -20°C to 65°C to -7°F to 149°F
Low temperature option : -40°C to 65°C / -40°F to 149°F
- Resolution: 0.1°F / 0.1°C
- Temperature error: $\pm 0.3^{\circ}\text{C}$ / 0.5°F typical; $\pm 0.7^{\circ}\text{C}$ / 1.0°F max.

DISPLAYS

- Parameter value: LCD, 7 segment, 8 character
- Parameter description: LCD, dot matrix, 16 character

ELECTRICAL

- Power: Two versions - lithium battery pack and (6) alkaline "C" cells
- Circuitry: 3V surface mount technology
- Intrinsically safe, rated for Class 1: Div. 1; Group D
- CSA LR 59221; UL 29R1

INPUT

- High frequency solid state sensor

OUTPUT

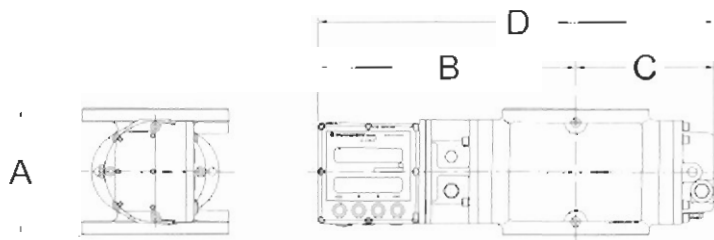
- Form "A" opto-isolated solid state (3 outputs)

Corrected volume	1 output
Uncorrected volume	1 output
Alarm	1 output
- Operating voltage: 0-25 VDC
- Current: 0-100 ma
- Pulse width: 50ms

PHYSICAL CHARACTERISTICS

- Cast aluminum enclosure
- Dimensions: 133mm x 143mm x 108mm / 5.25" x 5.62" x 4.25"
- ECM2™ module weight: 2.5 kg / 5.5 lb.

DIMENSIONS



METER SIZE	A (mm)	B (mm)	C (mm)	D (mm)	DIN FLANGE (mm)	FLANGE ANSI 150	WEIGHT (kg)
G40 / RG2000	171	275	126	401	40 or 50	2"	10.8
G65 / RG3000	171	300	151	451	50	2"	11.8
G100 / RG5000	171	350	201	551	80	3"	14.5
G160 / RG7000	241	352	201	553	80 or 100	3"	23.6
G250 / RG11000	241	401	250	651	100	4"	29.9
G400 / RG16000	241	452	301	753	100	4"	33.2

METER SIZE	A (inches)	B (inches)	C (inches)	D (inches)	FLANGE ANSI 150	WEIGHT (lbs.)
RM2000 / RM55	6.75	10.63	4.75	15.38	—	23.5
RM3000 / RM85	6.75	11.46	5.58	17.04	—	25.0
RM5000 / RM140	6.75	13.18	7.30	20.48	—	30.0
RM7000 / RM200	9.50	12.84	6.90	19.74	—	46.6
RM11000 / RM300	9.50	15.21	9.27	24.48	—	57.7
RM16000 / RM450	9.50	15.78	9.84	25.62	—	65.8
RM23000 / RM650	9.50	17.78	11.84	29.62	—	73.0



Systems Inc.

International Measurement and Control Systems

Manufacturers/Distributors of
Precision Gas Measurement Equipment

IMAC SYSTEMS, INC.

90 MAIN ST. • P.O. BOX 1605 • TULLYTOWN, PA 19007 • 1-800-955-4GAS (4427) • Tel: (215) 946-2200 • FAX: (215) 943-2984
www.imacsystems.com • e-mail: sales@imacsystems.com

Distributed by: